



WHO WE ARE

RHA Health Services is dedicated to supporting people with disabilities as they strive towards increasing independence, personal growth and opportunities in their communities. Our comprehensive support network spans several states and serves both children and adults of every level of need. We offer services and supports that are both person-centered and reflect our commitment to community inclusion and holistic, integrated care.

Every day, RHA fosters real opportunities for individuals with physical, intellectual and developmental disabilities, supporting them as they learn and develop new skills. We believe that people of all capabilities can strive for achievement and growth, setting goals and making life choices based on their own strengths, preferences, interests and abilities. ***The RHA approach to care puts the needs of the people and communities we support at the center of everything we do.***

CONTACT US

**For referrals, please contact the
RHA office closest to you:**

RHA FAYETTEVILLE

2248 Wingate Rd.
Fayetteville, NC 28304
Phone: 910-424-2121
Fax: 910-424-7045

RHA MAXTON

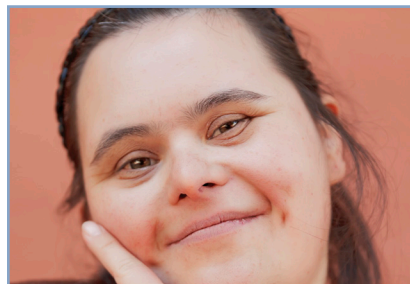
15235 Airport Rd.
Maxton, NC 28364
Phone: 910-844-9664
Fax: 910-844-9668

RHA LUMBERTON

2003 Godwin Ave., Suite A
Lumberton, NC 28358
Phone: 910-739-1468
Fax: 910-739-6134

RHA BENSON

501-C S. Wall St.
Benson, NC 27504
Phone: 919-894-5124
Fax: 919-894-1488



To learn more about our services,
please visit our website @
www.rhahealthservices.org.

Find us on 



RHA HEALTH SERVICES

**Fayetteville • Benson
Lumberton • Maxton**

*Vocational, Periodic &
Residential Services*





WHAT WE OFFER

- ICF/IDD
- CAP I/DD Services
- Alternative Family Living (AFL)
- Supported Living
- VR Supported Employment
- Adult Developmental Vocational Program (ADVP)
- Residential Services
- Independent Living Services
- Skilled Nursing Services
- Innovations Waiver Program & State Funded Periodic Services for Children and Adults
- Therapeutic Family Services
- Psychosocial Rehabilitation (PSR)
- Outpatient Therapy
- Psychiatry & Psychological Services

"My son loves going to RHA. They are doing such good work! And what a fantastic staff who really care!" -- Ms. Dunn



Strengthening Individuals & Communities

The health and safety of the people we support is our first priority. Our services offer a family-centered approach organized around individualized, person-centered planning. We focus on helping people reach their highest level of independence through improvements in self-help, socialization and adaptive skills. We support people as they strengthen and practice the skills learned in school or in physical, occupational and speech therapies.

WHO WE SUPPORT

We provide and coordinate services for adults, adolescents and children who have physical, intellectual or developmental disabilities.

WHERE WE ARE

RHA in Fayetteville, Benson, Lumberton and Maxton supports residents of the following counties:

- | | |
|--------------|------------|
| ■ Bladen | ■ Moore |
| ■ Columbus | ■ Johnston |
| ■ Cumberland | ■ Robeson |
| ■ Harnett | |
| ■ Lee | |
| ■ Hoke | |
| ■ Scotland | |



APPLY FOR SERVICES

To coordinate services for a person with a disability, please contact the RHA office closest to you. A list of the offices in this region can be found on the back of this brochure. When you call, you will be connected with one of the following individuals who will walk you through the referral process:

- Administrator • Program Specialist
- Community Coordinator
- QP (Qualified Professional)

