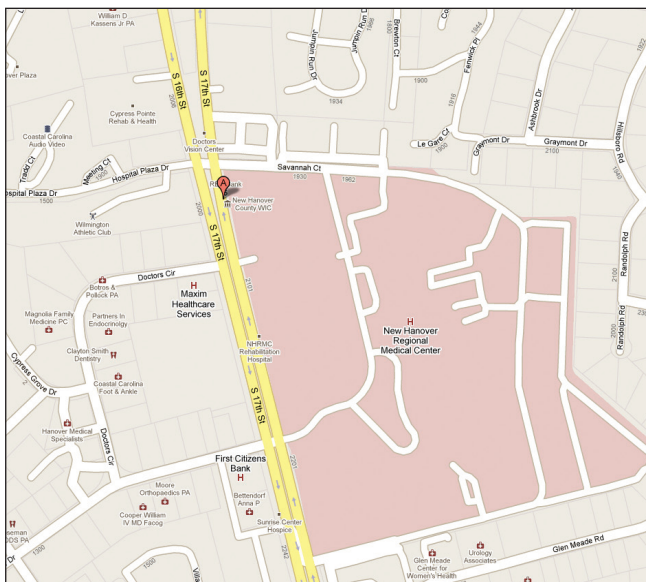




## THE HARBOR

2023-1 South 17th St.  
Wilmington, NC, 28401  
Phone #: 910-632-2191  
Fax #: 910-632-2354



### Map & Directions:

Head southwest on I-140.

Take exit 14 to merge onto I-140 W/US-17 S/US-421.

Merge onto US-17 BUS N/US-421 S/US-74 E/US-76.

East via the ramp to US-17 BUS N/Carolina Beach.

Continue to go east and follow US-76.

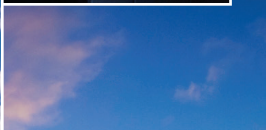
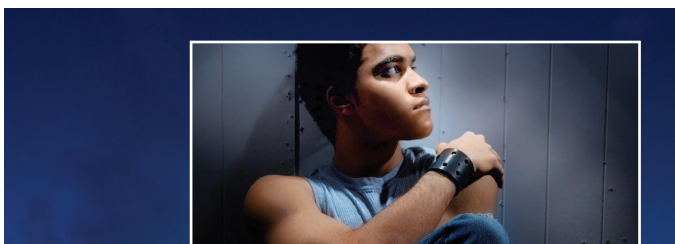
Turn right at S. 16th Street. Continue onto South 17th Street.  
Make a U-turn at Medical Center Drive.

The Harbor is tucked between the New Hanover County Health Department and Southeastern Mental Health on South 17th Street.

**Admissions Line: 1-877-704-8355**



**The Harbor** is operated by RHA Health Services. Through its behavioral health programs, RHA has served over 12,000 people across North Carolina and has been helping people lead healthier, more fulfilling lives since 2005.



Launching  
a New Beginning



**Welcome to  
The Harbor**

Professional Treatment Services  
in a Facility-Based Crisis Program and  
Non-Hospital Medical Detoxification

Our 16-bed, 24-hour secured facility offers crisis stabilization, short-term mental health care and substance use detox services for adults who suffer from mental illness. We offer community-based therapeutic interventions for those in crisis situations as a viable alternative to expensive hospitalization.

## For Our Consumers We Offer:

- Admissions for 1 hour up to 7 days.  
**Call Our Admissions Line: 1-877-704-8355.**
- Complete Medical and Psychiatric Evaluation, including a review of your medical history, mental health treatment records, and all medications.
- 24-hour medical supervision.
- An experienced and highly-credentialed team including our medical director, staff psychiatrist, registered nurses, licensed therapists, and skilled technicians.
- Closely monitored treatments and medication management designed to safely stabilize you and be responsive to any medical or psychiatric conditions you may have.
- Comprehensive case management.
- Group Therapy & Individual Counseling in a supportive, home-like environment.

## Our Holistic, Person-Centered Approach to Treatment



We work with you in identifying your unique treatment goals. Our skilled providers help you chart an individualized Person-Centered Plan that outlines the steps you will need to take to maintain your progress, reach your mental health goals, and live the kind of life you want in your own community.

## A Comprehensive Discharge Plan to Help Keep You on Track

Treatment does not end with your discharge from The Harbor! Our providers will work with you to develop a comprehensive after-care plan that links you with community services and supports after your discharge, including a crisis coordination plan that can serve as a guide to you or your loved ones should you suffer any future episodes of mental health or substance use crisis.



## Who is Eligible to be Admitted to The Harbor?

- Individuals who are at immediate risk of harming themselves or others because of an acute mental health crisis situation.
- Individuals with mental illness who are or may be in need of immediate evaluation or medication adjustment due to sudden and disruptive changes in mood or behavior.
- The Harbor does accept persons who have been petitioned under Involuntary Commitment.

## How Do I Make a Referral?

**Call our Admissions Line at 1-877-704-8355**

Our trained staff will ask questions to determine if The Harbor is the appropriate place for the individual in crisis to receive care. Please be prepared to describe in detail the person's medical and mental health history as well as the current behavioral disturbances which have led to this referral. Even if you do not qualify for admission to The Harbor, our staff can help you navigate the medical and mental health system to find the kind of treatment you need.

## How Do I Pay For Treatment at The Harbor?



The Harbor is committed to providing affordable, quality care regardless of a person's ability to pay. We accept virtually all sources of public and private funding. We bill through Medicaid and the NC Health Choice State Insurance Plan and accept Medicare for qualifying cases. We also have contractual agreements with many private insurance companies. Individuals who self-pay are required to prepay for services.