



RHA Health Services offers a broad range of services and supports for adults and children living with intellectual and developmental disabilities (IDD) across the state of North Carolina.

Our IDD services are committed to the dignity, independence and equitable treatment of people with intellectual disabilities, as well as their full inclusion into the communities around them.



RESIDENTIAL SERVICES

Our residential services in North Carolina are designed to meet every level of need, from Independent and Family-Model Living, including group homes for adults with disabilities, to large medical centers with intensive, specialized care for adults and children who are medically fragile.



ALTERNATIVE FAMILY LIVING (AFL) SERVICES

AFL is an innovative model of providing support and care for disabled adults and children who require help with day-to-day activities and whose needs can be met by an individual or family in a natural home setting.



DAY & EMPLOYMENT SUPPORTS

Our day supports serve all ages and focus on helping people set and reach personal goals, form and sustain meaningful connections and relationships, achieve positive health outcomes, and more.



COMMUNITY ALTERNATIVE PROGRAM FOR DISABLED CHILDREN & ADULTS

CAP/C provides home and community-based services to medically fragile children (ages 21 and under).

We also offer an array of supported employment services, including Employment and Independence for People with Disabilities (previously Vocational Rehabilitation), to help adults with disabilities obtain competitive employment and gain training and skills to work as independently as possible.

CAP/DA provides community and home care for disabled adults at risk of being placed in a nursing facility. We coordinate programs that allow them to stay at home with their families.



TAILORED CARE MANAGEMENT

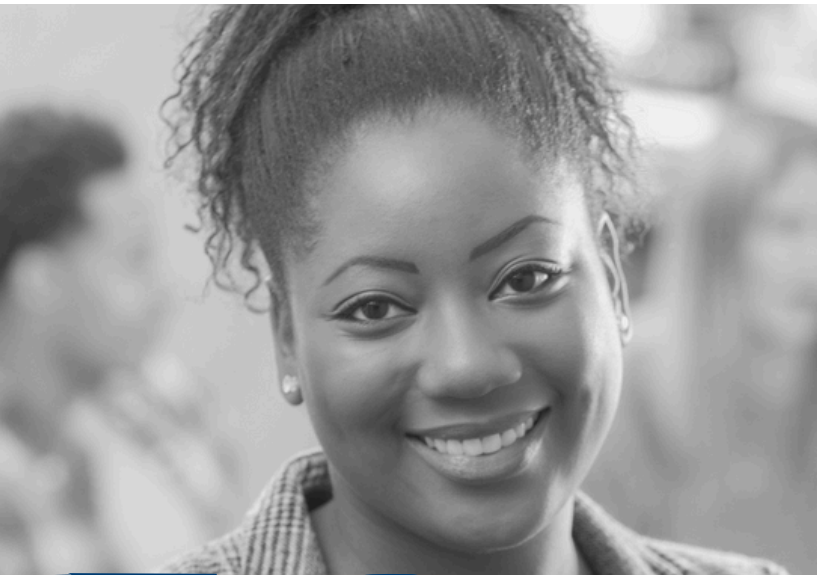
Tailored Care Management is a North Carolina Medicaid service option. Those who choose Tailored Care Management have a designated Care Manager who, with the support of a specialized team, coordinates with their physicians, connects them with necessary resources, and creates a network of supports to achieve better health and quality of life outcomes.

RHA is a Certified Care Management Agency by the North Carolina Department of Health and Human Services.

RHA also provides support in North Carolina through the NC START program.

To make a referral for services, please visit:
rhahealth.org/referral





RHA offers a wide array of mental health and substance use programs and services for adults and children, provided by experienced and compassionate professionals. This includes services in our offices, telehealth options, and community-based and crisis services to serve people where they are.

Regardless of where you are on the road to recovery and wellness, we offer services to meet your needs.

BASIC OUTPATIENT SERVICES

Comprehensive Clinical Assessments:

Our licensed clinicians perform an evaluation that is professional, thorough, informative, and discreet.

Medication Management:

Designed to seamlessly integrate safe and effective prescribed medications into treatment.

Outpatient Therapy (Individual, Family & Group):

Group and individual therapy sessions provide opportunities to celebrate progress, discuss individual challenges, and more.

OTHER OUTPATIENT AND COMMUNITY-BASED SERVICES

- Assertive Community Treatment Team (ACTT)
- Community Support Team
- Comprehensive Case Management
- Deaf & Hard of Hearing Services
- Intensive In-Home Services
- IPS-Supported Employment
- Law Enforcement Co-Response Programs
- Peer Support Services
- Psychosocial Rehabilitation (PSR)
- School-Based Therapy
- Transition Management Services

Services vary by location. To confirm service availability, please visit the locations map on our website and contact the office nearest you, or call 1.800.848.0180.

SUBSTANCE USE SERVICES

We specialize in providing comprehensive wraparound support, advocacy, and various levels of treatment to people who struggle with addictive diseases.

Services include:

- Comprehensive Clinical Assessments
- Medication-Assisted Treatment (MAT)
- Substance Abuse Comprehensive Outpatient Treatment (SACOT)
- Substance Abuse Intensive Outpatient Program (SAIOP)
- Substance Abuse Outpatient Program (SAOP)

CRISIS SERVICES

- Behavioral Health Crisis Centers
- Facility-Based Crisis & Non-Hospital Medical Detox
- Mobile Crisis Management
- Same-Day Access & Walk-In Crisis

TAILORED CARE MANAGEMENT

Tailored Care Management is a North Carolina Medicaid service option. Those who choose Tailored Care Management have a Care Manager who, with the support of a specialized team, coordinates all aspects of the individual's care needs, including physicians, community supports, and more. Care Managers work closely with individuals throughout the entire process to ensure that they are staying connected to resources and meeting their behavioral health goals.